

# DE ELS

## WAALWIJK

PRESENTATIE RAAD  
28 MAART 2024



BEDAUX DE BROUWER



DE ELS, WAALWIJK

# OVERVIEW | WORK IN PROGRESS



BEDAUX DE BROUWER





DE ELS, WAALWIJK  
VISIE OP DE OPGAVEN



verbinden

winkelhart beter verbinden  
met het centrum



verblijven

vergroen en versterken  
openbare ruimte

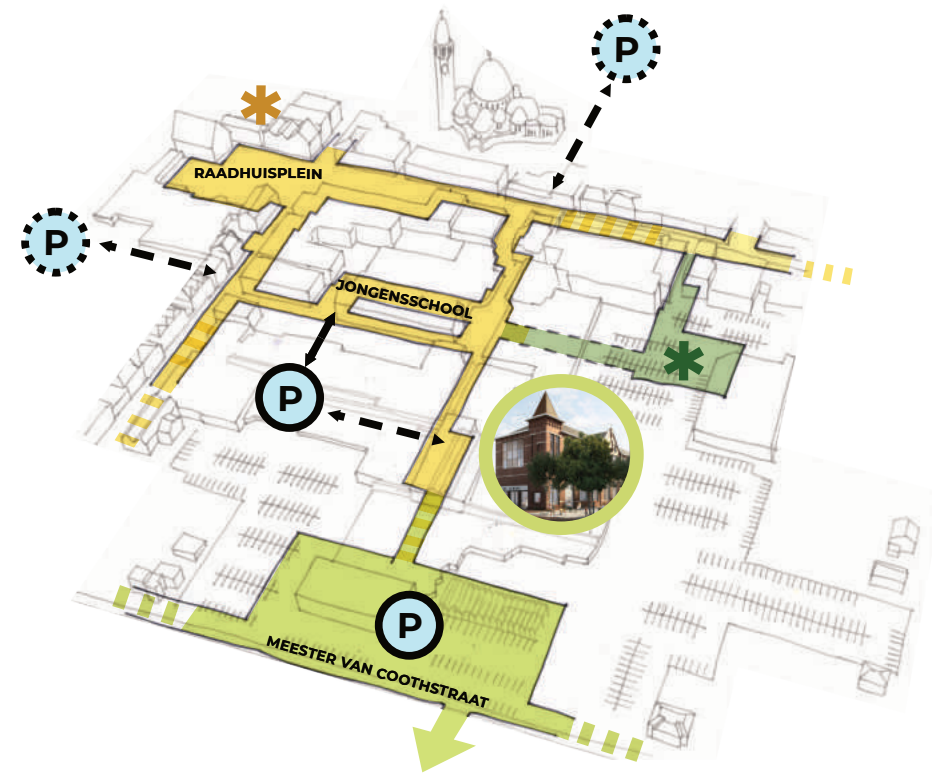


vermengen

gevarieerd centrum  
programmamix

# DE ELS, WAALWIJK

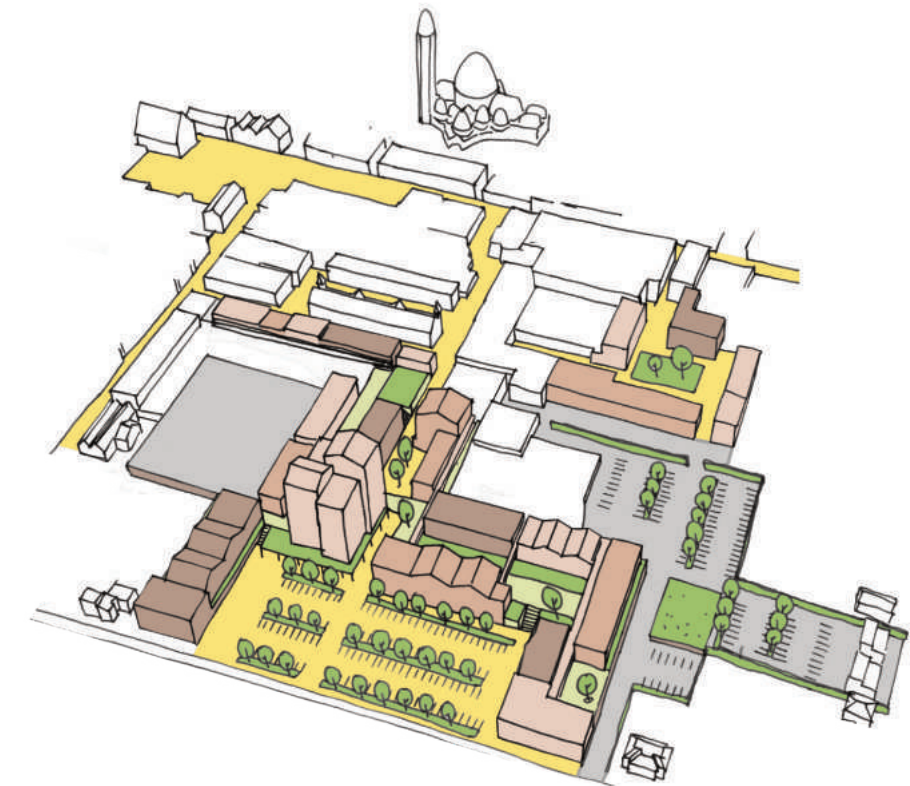
## VISIE OP DE OPGAVEN



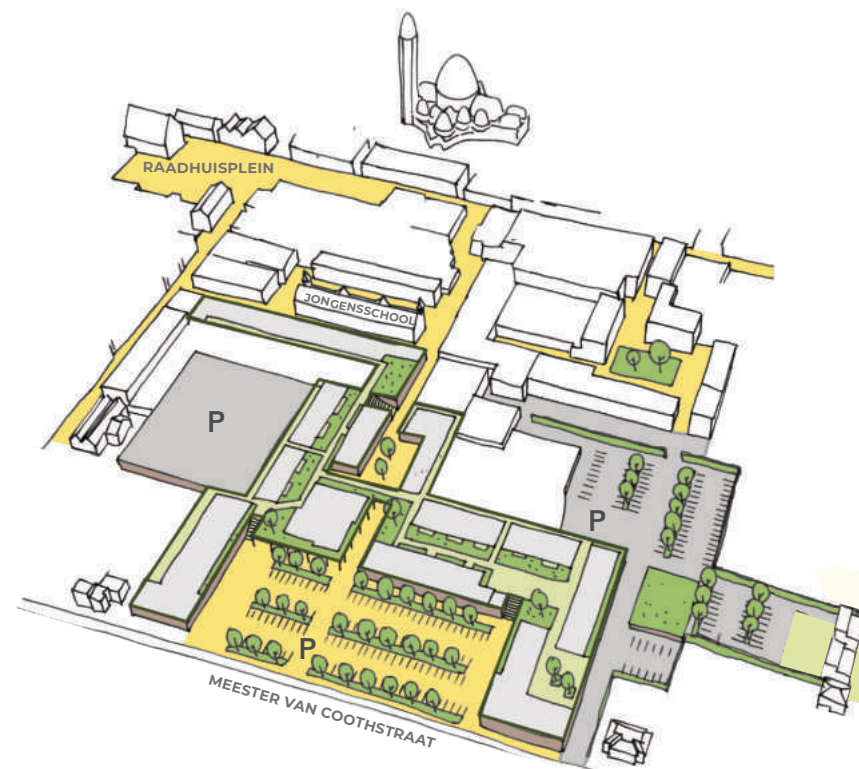
verbinden



verblijven

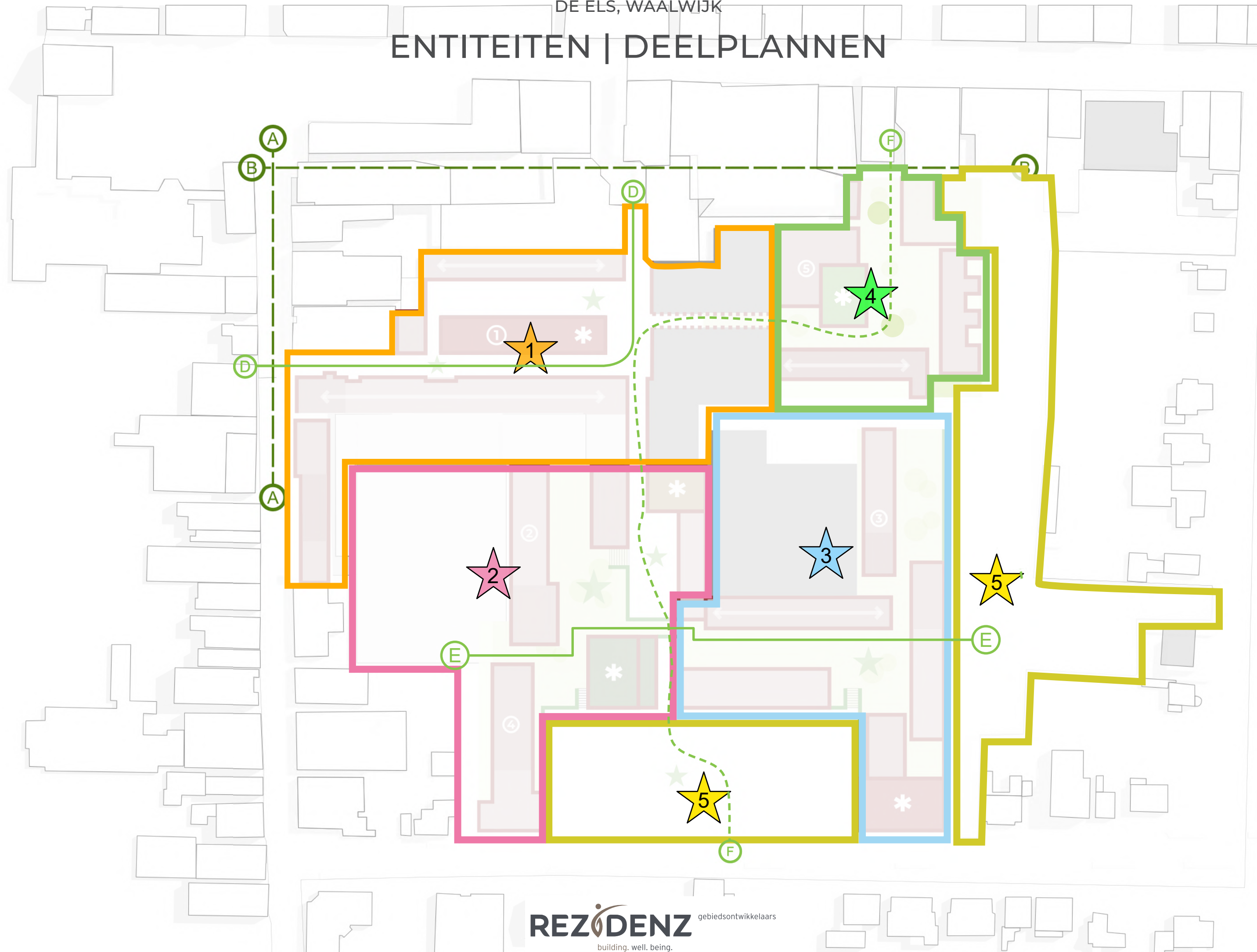


vermengen



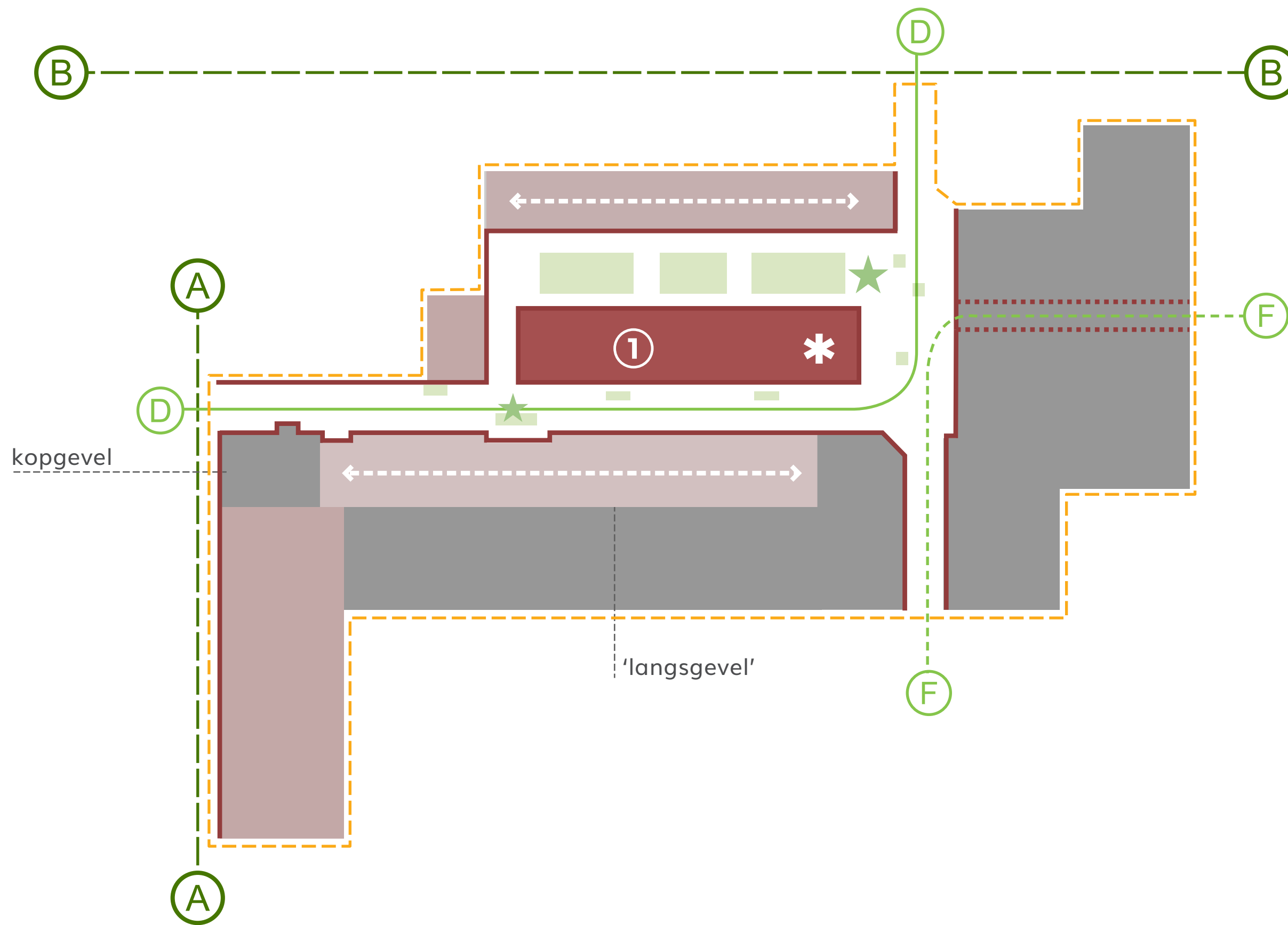


# ENTITEITEN | DEELPLANNEN



- RAADHUISPLEIN
- 1. SCHOOLKWARTIER
- 2. DE LOINT
- 3. BELVEDERE
- 4. WOONHOF
- 5. MR V. COOTHPLEIN / PARKEREN

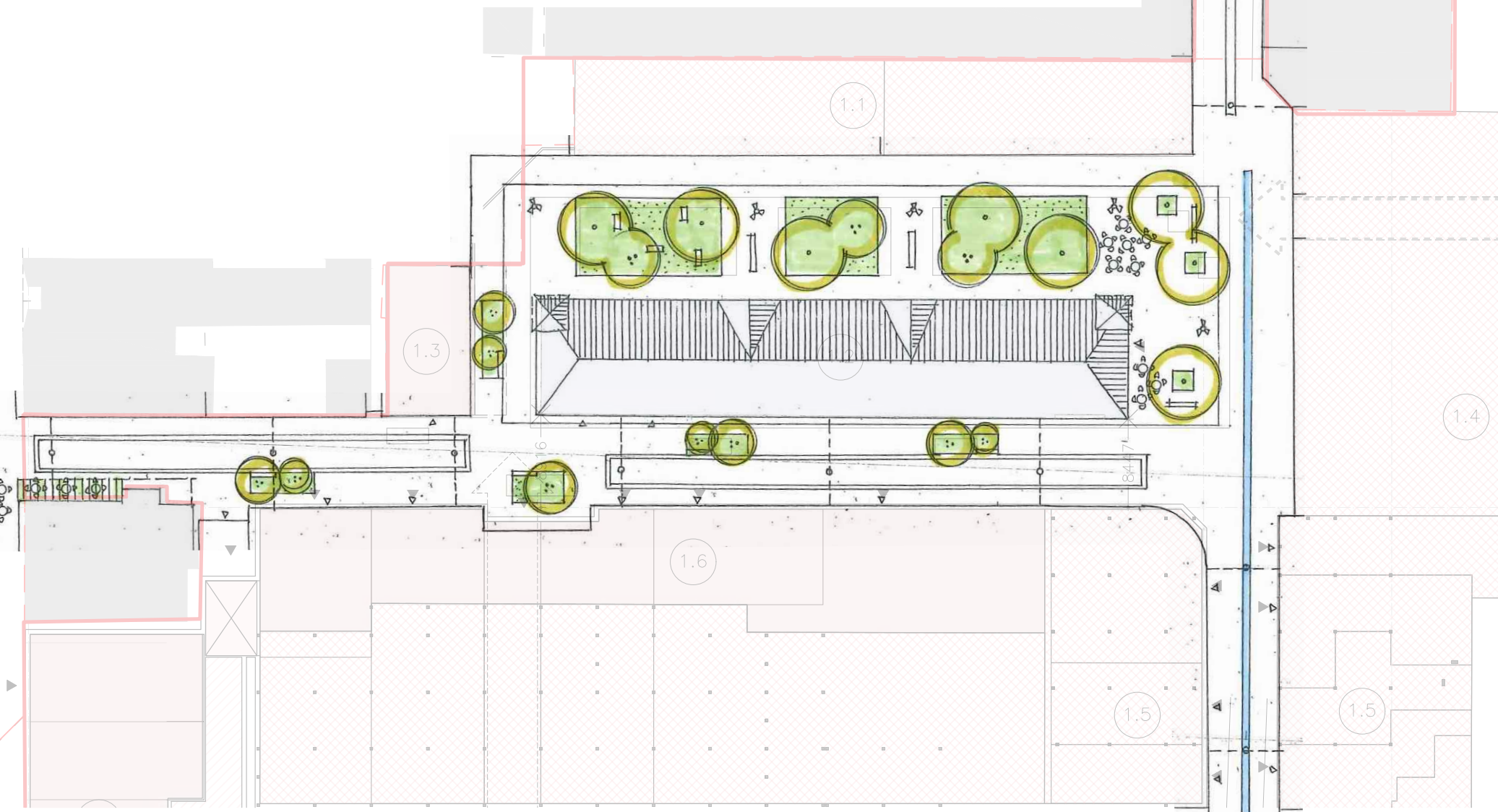
DE ELS, WAALWIJK  
SCHOOLKWARTIER



lange lijnen | eenduidige gevel | subtiele verschillen en geleding in gevel | (minimaal) verspringende rooilijn | communicerende gevels



# SCHOOLKWARTIER



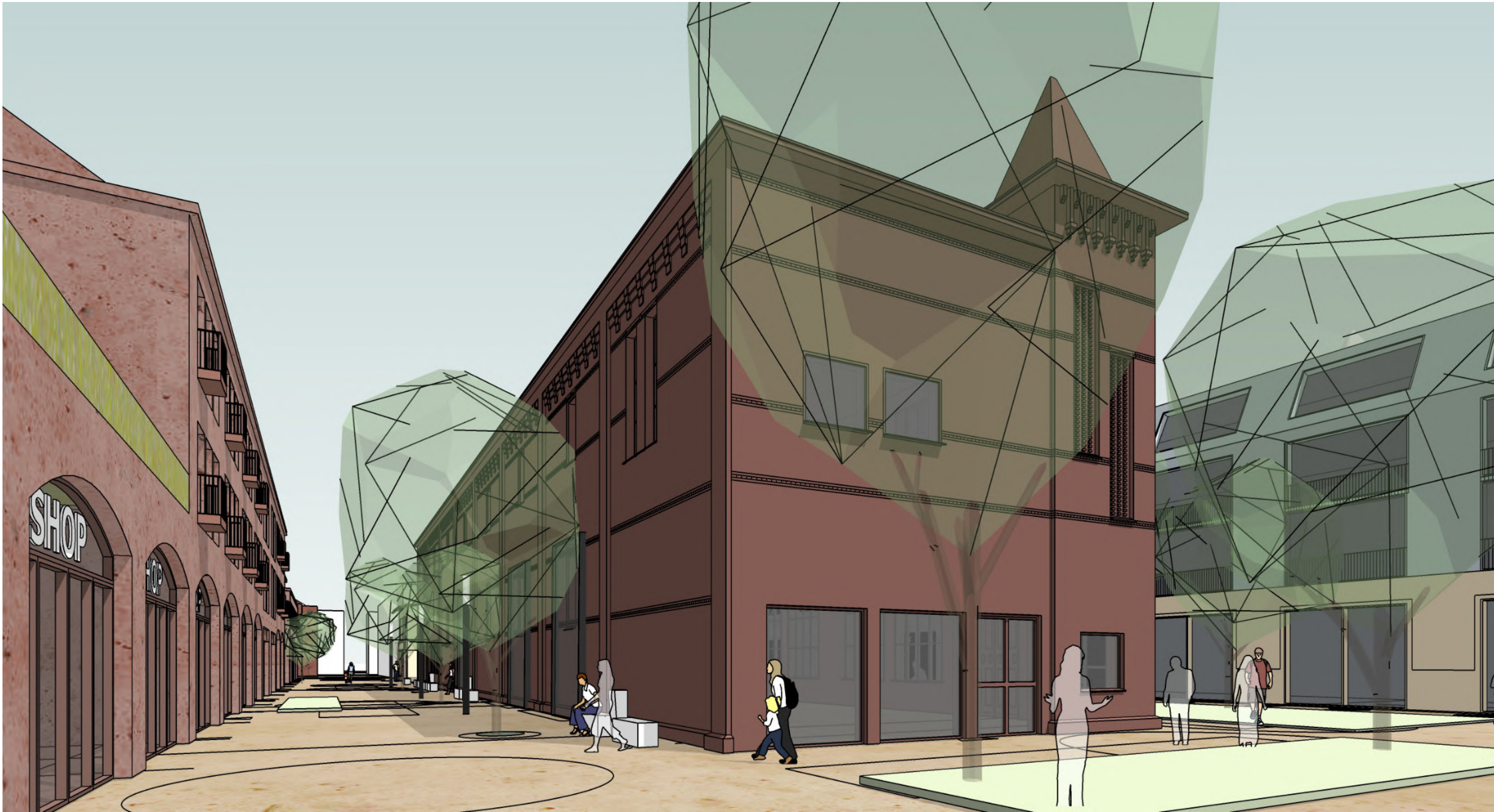


DE ELS, WAALWIJK  
SCHOOLKWARTIER

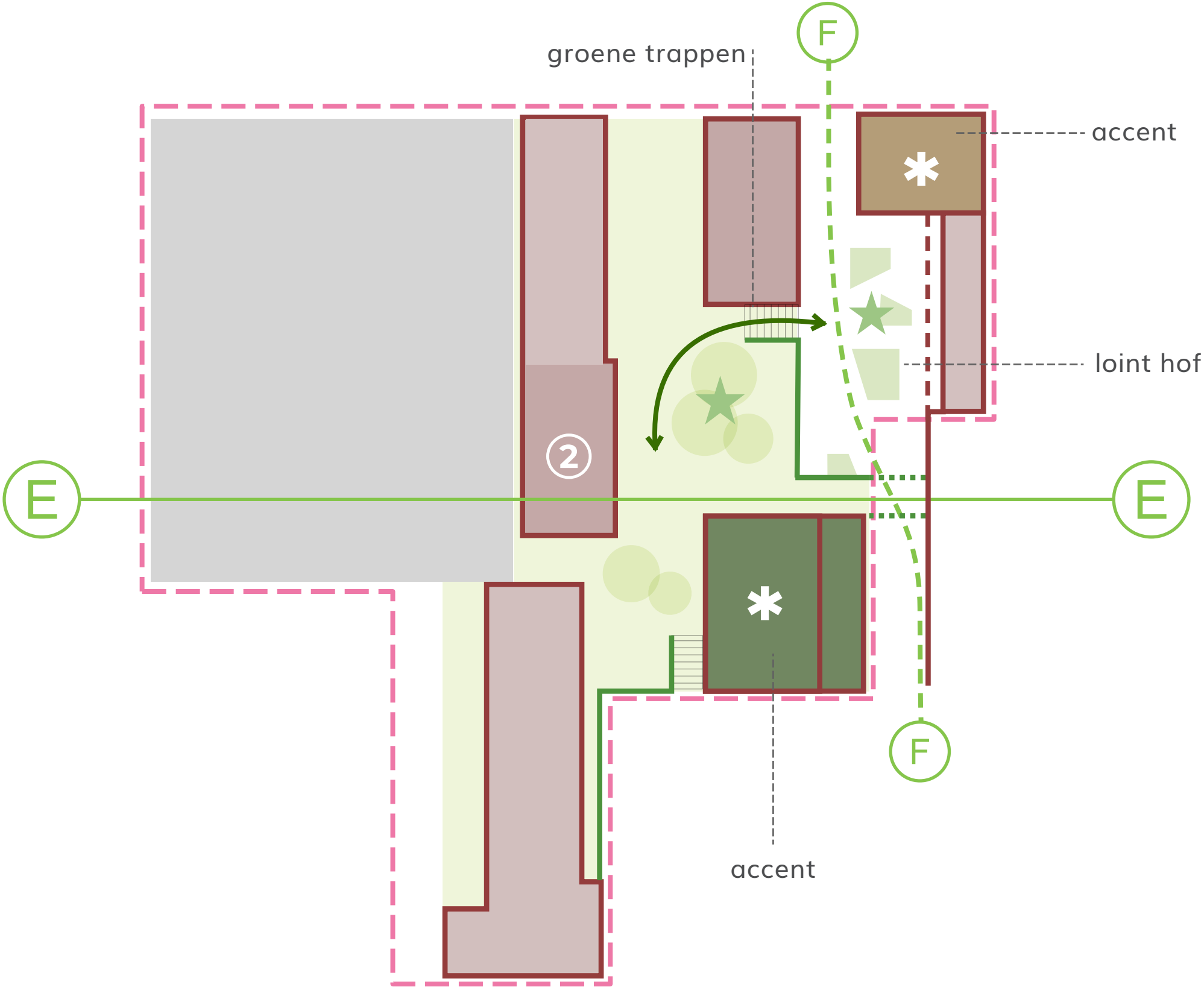




DE ELS, WAALWIJK  
SCHOOLKWARTIER



# LOINT HOF



verbinden en verblijven | loint hof | groen en water zichtbaar en beleefbaar | communicerende plinten



DE ELS, WAALWIJK  
LOINT HOF





DE ELS, WAALWIJK

# LOINT HOF



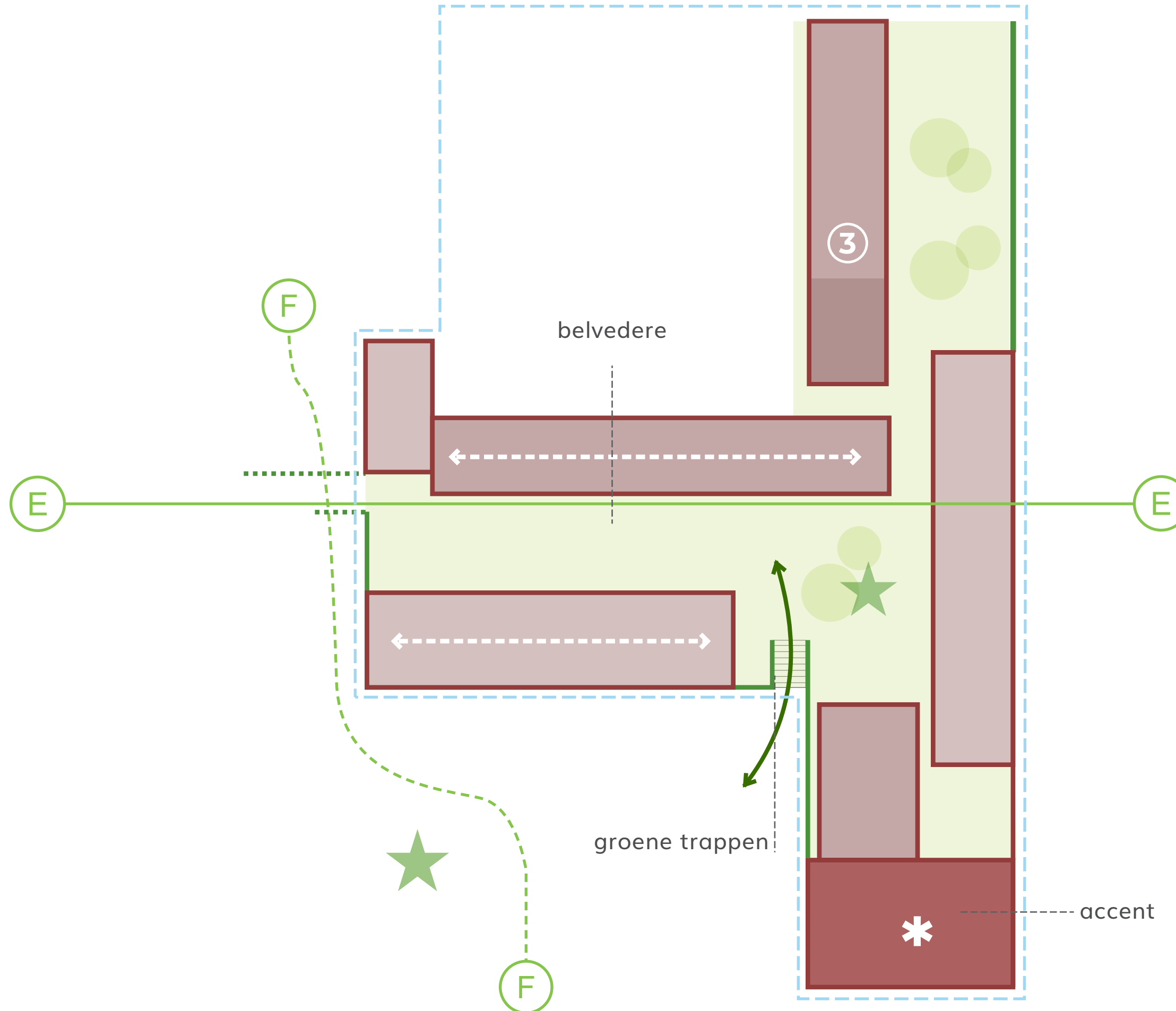


DE ELS, WAALWIJK

# LOINT HOF



DE ELS, WAALWIJK  
BELVEDERE



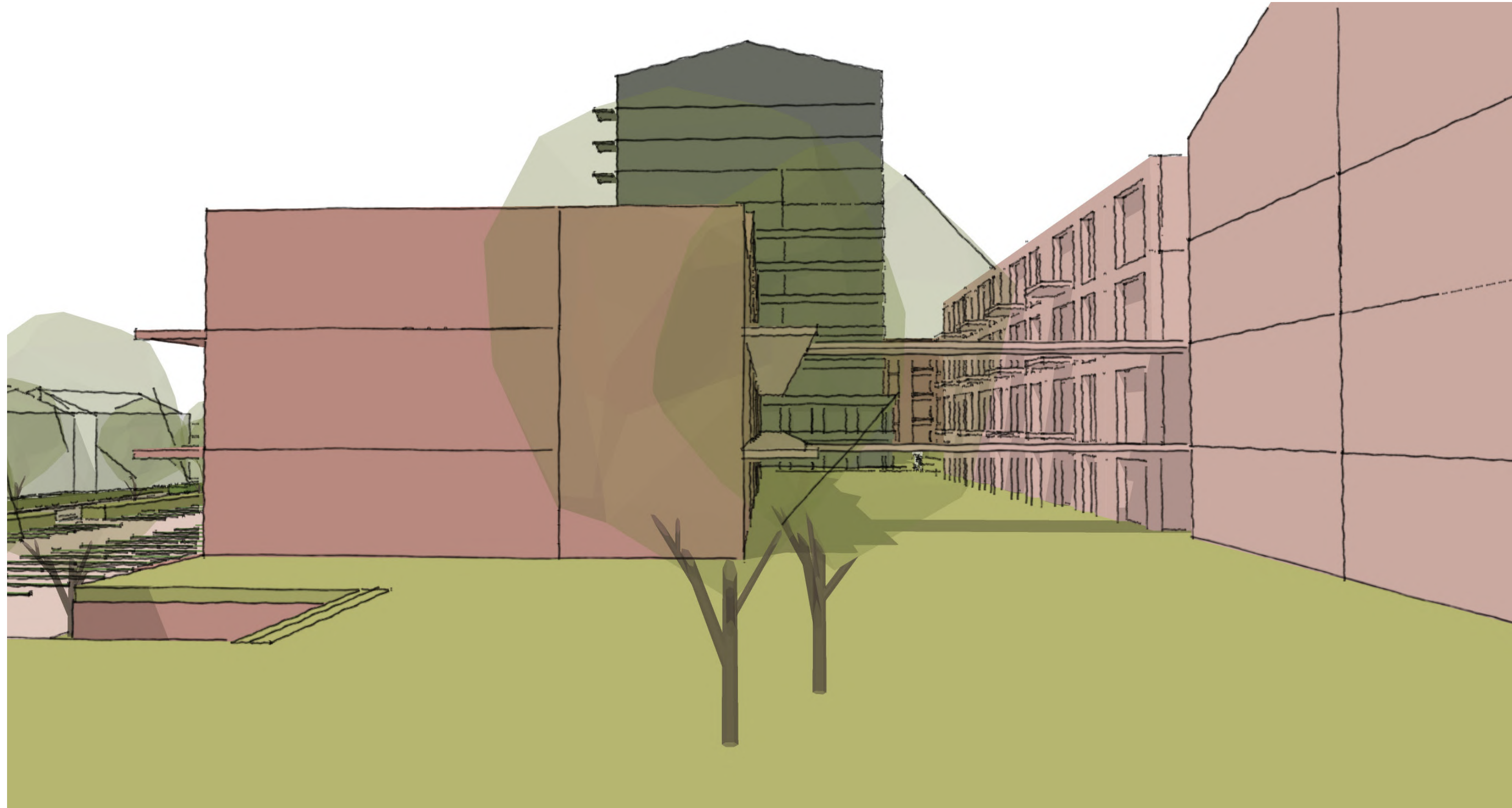


DE ELS, WAALWIJK  
BELVEDERE

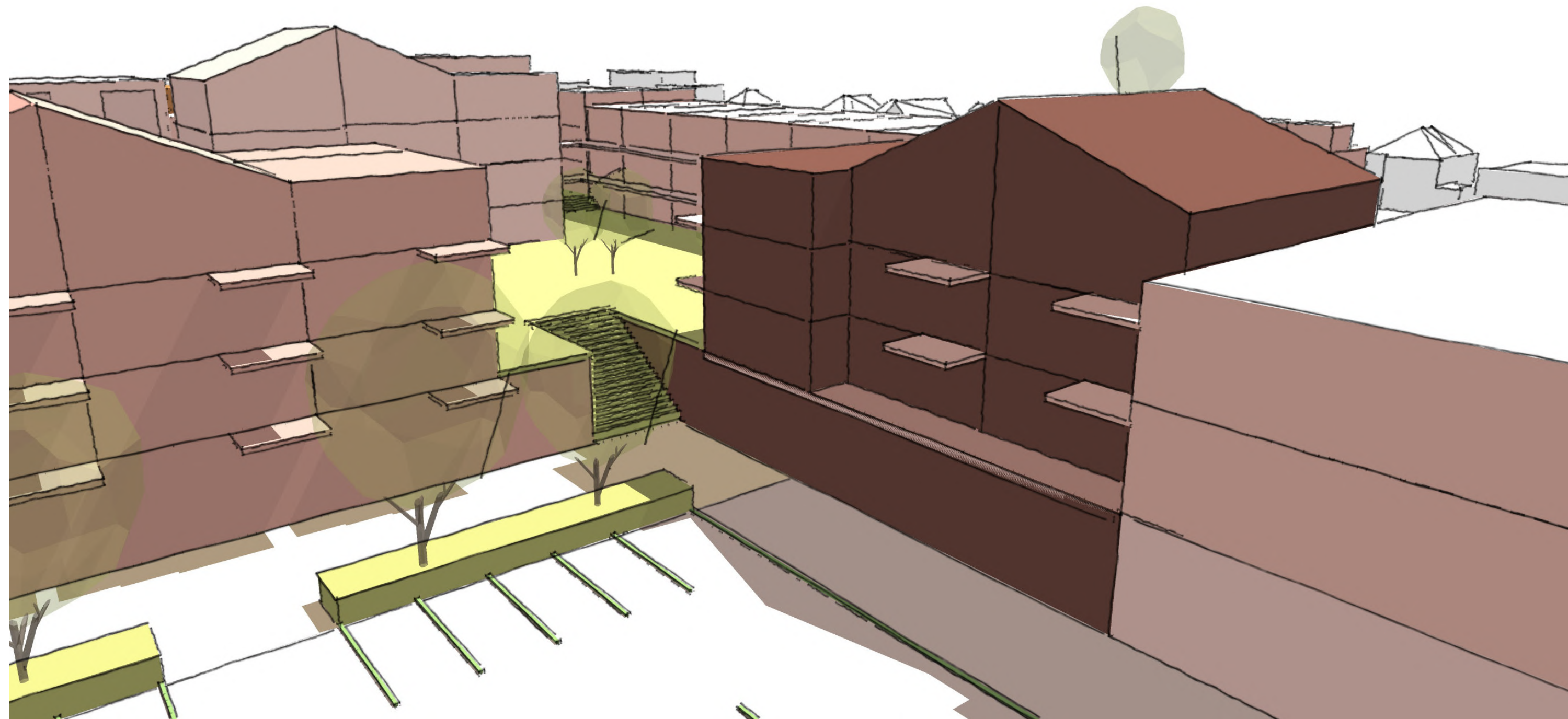




DE ELS, WAALWIJK  
BELVEDERE

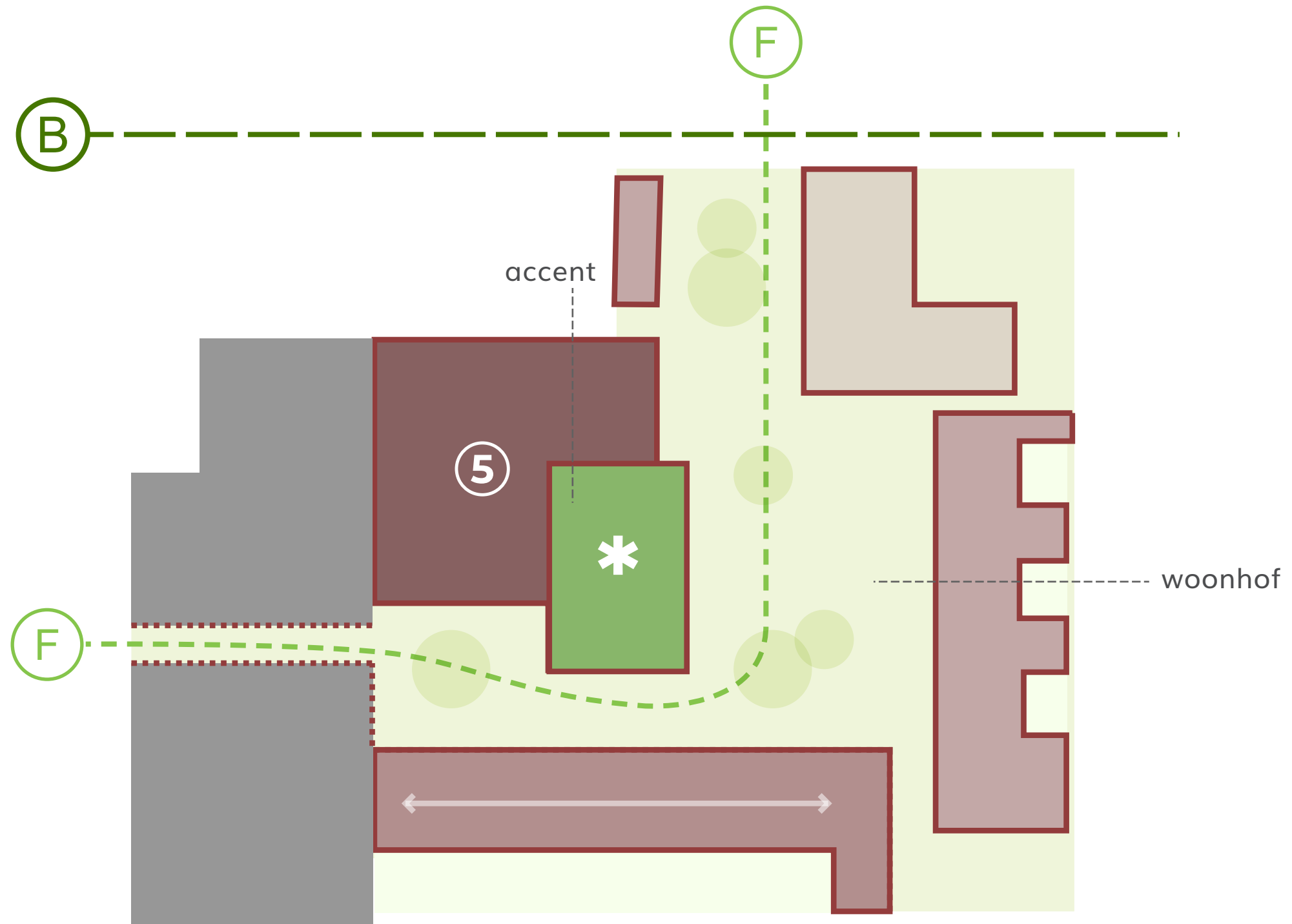


DE ELS, WAALWIJK  
BELVEDERE





DE ELS, WAALWIJK  
WOONHOF



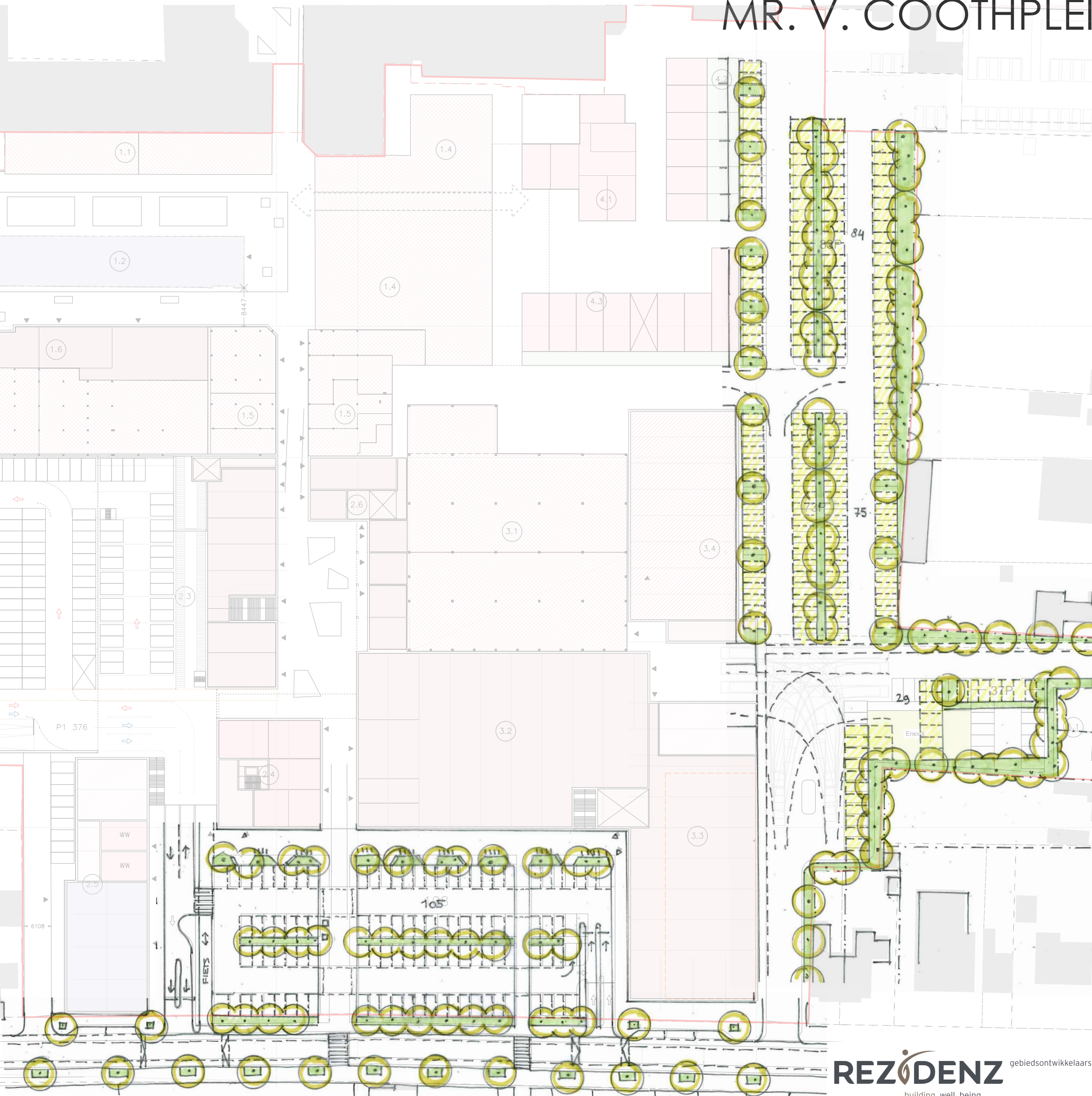


DE ELS, WAALWIJK  
WOONHOF





# MR. V. COOTHPLEIN / PARKEREN





DE ELS, WAALWIJK

# MR. V. COOTHPLEIN

